

ASSEMBLY SCHEME and PART LIST

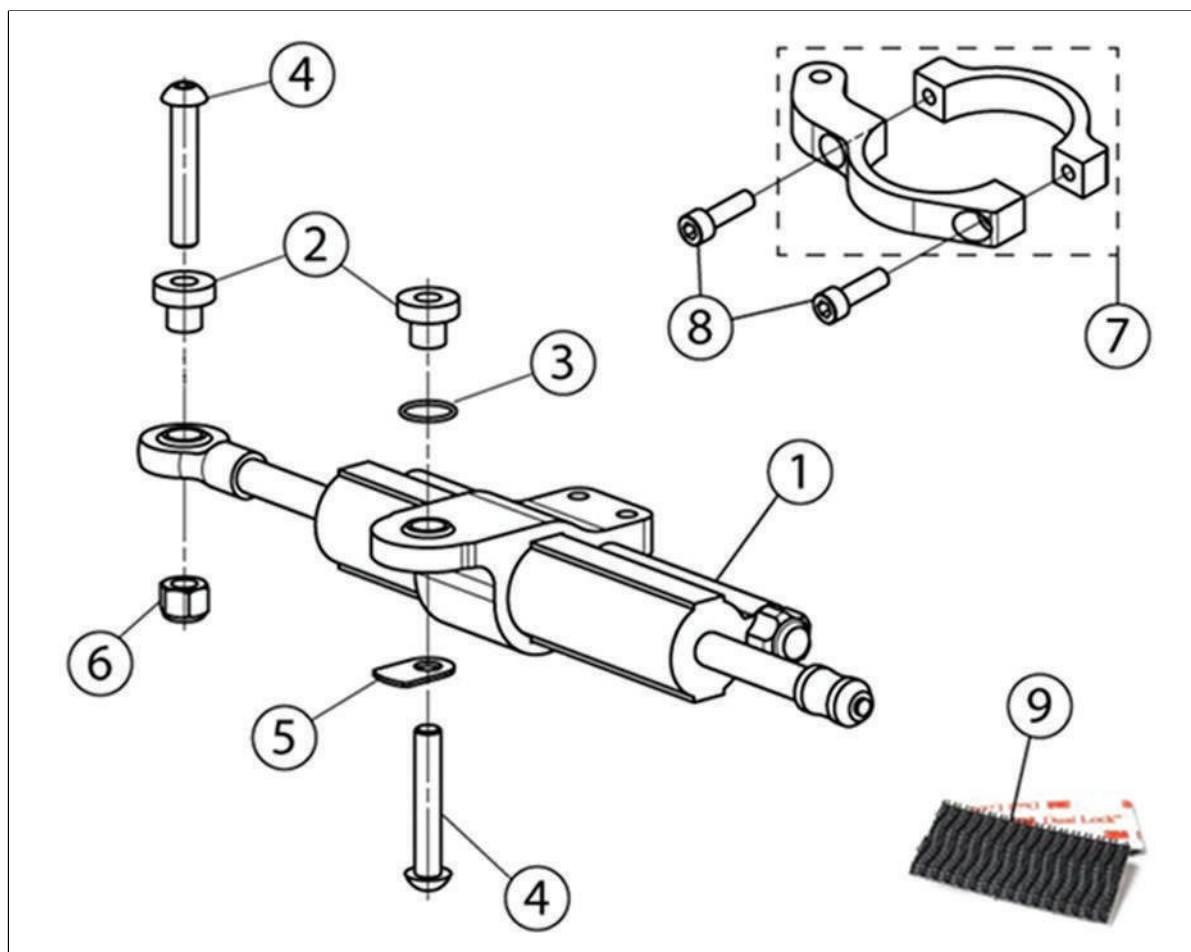
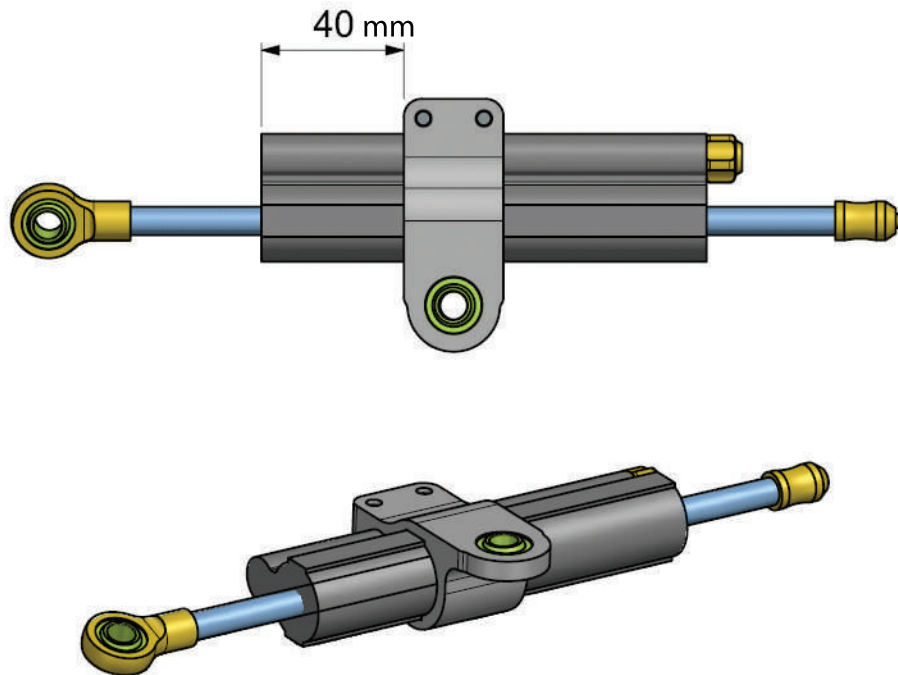


FIG. 1

POS.	CODE	DESCRIPTION	Q.TY
1	01.AT.0010.L	STEERING DAMPER	1
2	01.AT.0012.L	SPACER BUSH FOR ASSEMBLY STEERING DAMPER	2
3	01.AT.0013.L	OR ASSEMBLY STEERING DAMPER	1
4	01.OT.0108.L	SCREW TBEI M6x30	2
5	01.AT.0011.L	SPECIAL WASHER ASSEMBLY STEERING DAMPER	1
6	01.PE.0020.L	SELF-BLOCKING NUT M6 UNI7474	1
7	01.AT.0008.L	FORK CLAMP - INT RH	1
7	01.AT.0009.L	FORK CLAMP - EXT LH	1
8	01.PE.0017.L	SCREW TCEI M6x20	2
9	01.MO.0108.L	Dual Lock	1

PLACEMENT and ORIENTATION of CLAMP



1

RELOCATE THE HOUR COUNTER

To avoid interference with the steering damper it is necessary to relocate the hour counter originally located on front side of lower steering plate.

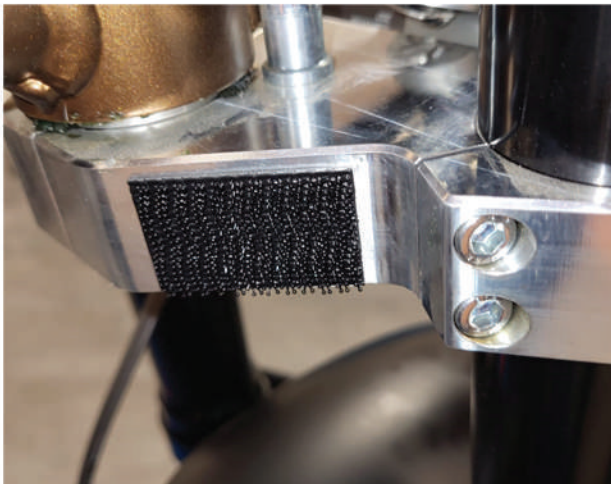


FIG. 2



FIG. 2a

Stick on the Dual lock supplied in kit in the right **rear** side of the lower plate (FIG. 2). Put the hourmeter on the Dual lock (FIG. 2a).

2

PLACEMENT and ORIENTATION FORK CLAMP

Place the clamps on the lower steering plate and secure it to the left fork stem with the two screws TCEI M6x20 (FIG.3)

Keep it aligned to the profile of the plate as shown (FIG.4).

(tightening torque 10Nm – 7.37lbf ft)

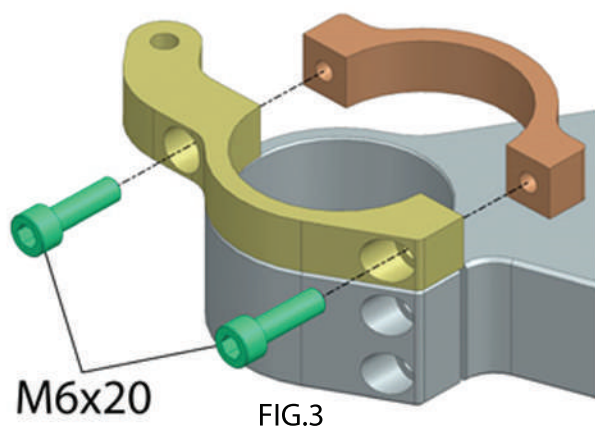


FIG.3

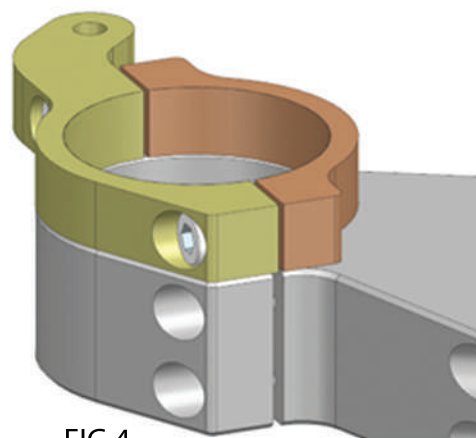


FIG.4

3

ASSEMBLY THE STEERING DUMPER

A. CENTRAL FIXING

Fix the steering damper unit to the M6 threaded bushing on the front frame with the screw TBEI M6x30 as shown (FIG.5).

(tightening torque 10Nm – 7.37lbf ft - **USE MEDIUM THREADLOCKER**)

ATTENTION: respect the assembly order of the components indicated in the exploded view FIG. 1

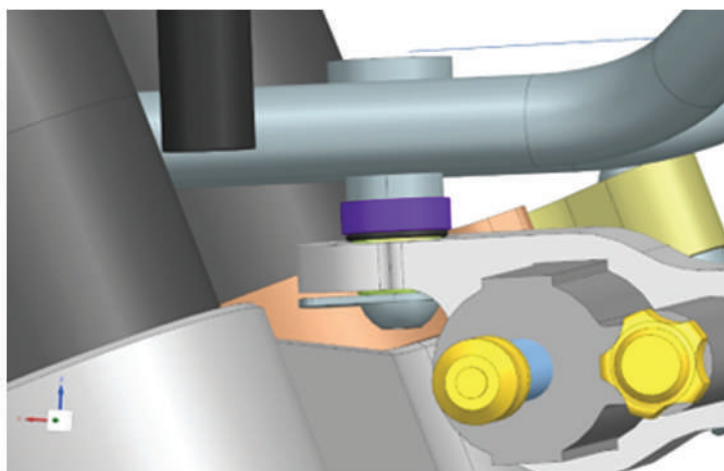


FIG.5

3

B. FORK FIXING

Fix the steering damper unit to the clamps mounted on the left fork stem with the TBEI M6x30 screw and the M6 self-locking nut (FIG.6).

(tightening torque 10Nm – 7.37lbf ft)

ATTENTION: respect the assembly order of the components indicated in the exploded view FIG. 1

IMPORTANT: orient the ball joint on the steering damper rod as shown in FIG. 7 (with lip A facing the bush)

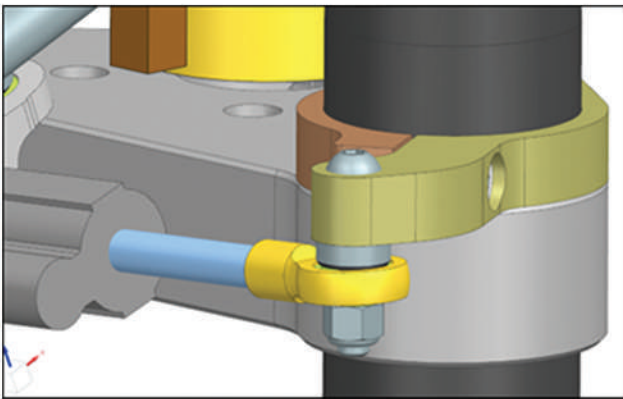


FIG.6

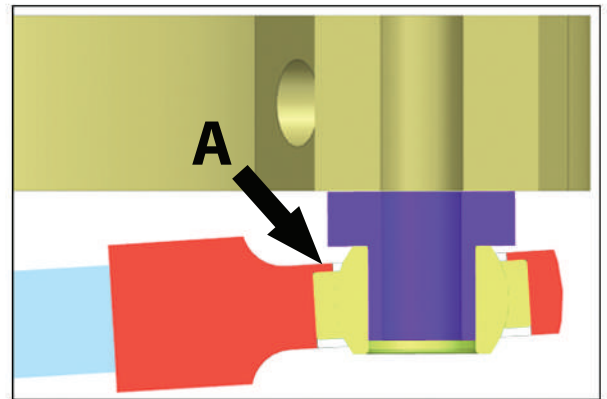


FIG.7

